

Massachusetts Calendar Year 2017 HAI Data Summary

Release Date: July 2018



Statewide Hospital Summary



2017 Hospital Survey Statistics

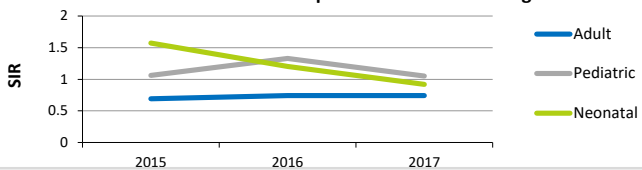
	Small Hospital <i><100 Beds</i>	Medium Hospital <i>100-299 Beds</i>	Large Hospital <i>300+ Beds</i>
Number of Hospitals	22	36	12
Medical School Affiliation	32%	56%	83%
Average Number of Beds	61	186	572
Average Number of ICU Beds	5	14	102
Average Number of Admissions	3,138	10,868	32,691
Average Number of Patient Days	14,249	45,350	167,873
Beds per Infection Preventionist	57.2	129.5	132.4

Central Line-Associated Blood Stream Infection

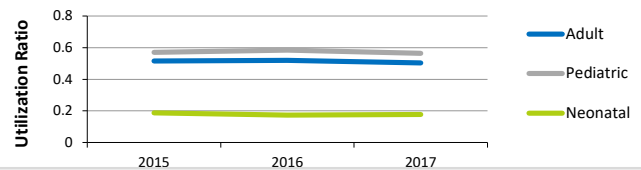
CLABSI SIRs by ICU Type for 2017 Calendar Year

ICU Type	Number of ICUs	Infections	Central Line Days	Predicted Infections	SIR	Confidence Interval	Interpretation
Burn	1	7	883	3.00	2.34	(1.02 - 4.62)	Higher
Cardiac	9	18	14,437	15.90	1.13	(0.69 - 1.75)	Same
Cardiothoracic	10	23	22,995	25.32	0.91	(0.59 - 1.34)	Same
Medical (major teaching)	19	21	33,920	37.98	0.55	(0.35 - 0.83)	Lower
Medical (not major teaching)	5	4	3,116	2.37	1.69	(0.53 - 4.07)	Same
Medical/Surgical (major teaching)	9	7	16,719	18.35	0.38	(0.16 - 0.75)	Lower
Medical/Surgical (not major teaching)	40	25	32,732	26.62	0.94	(0.62 - 1.36)	Same
Neurosurgical	3	4	5,803	6.55	0.61	(0.19 - 1.47)	Same
Pediatric	9	34	20,370	32.55	1.05	(0.73 - 1.44)	Same
Surgical	15	17	31,039	34.43	0.49	(0.29 - 0.77)	Lower
Trauma	3	5	4,290	6.55	0.76	(0.28 - 1.69)	Same
Neonatal	10	20	16,140	21.66	0.92	(0.58 - 1.40)	Same

State CLABSI SIRs Compared to National Average



State Central Line Utilization Ratios

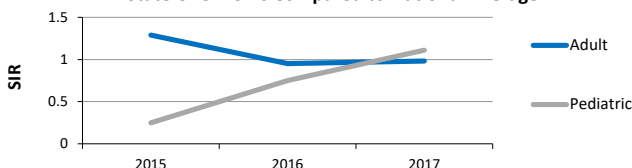


Catheter-Associated Urinary Tract Infection

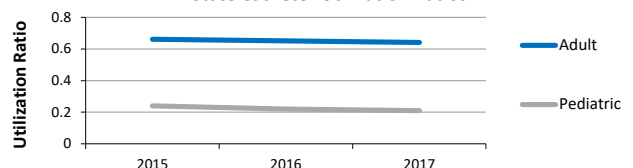
CAUTI SIRs by ICU Type for 2017 Calendar Year

ICU Type	Number of ICUs	Infections	Catheter Days	Predicted Infections	SIR	Confidence Interval	Interpretation
Burn	1	4	831	2.84	1.41	(0.44 - 3.39)	Same
Cardiac	9	24	13,887	21.22	1.13	(0.74 - 1.65)	Same
Cardiothoracic	10	25	24,869	31.11	0.80	(0.53 - 1.16)	Same
Medical (major teaching)	19	44	40,295	52.92	0.83	(0.61 - 1.10)	Same
Medical (not major teaching)	5	3	5,296	4.13	0.73	(0.18 - 1.97)	Same
Medical/Surgical (major teaching)	9	13	21,434	26.80	0.49	(0.27 - 0.80)	Lower
Medical/Surgical (not major teaching)	40	49	48,999	40.02	1.22	(0.91 - 1.60)	Same
Neurosurgical	3	46	8,331	29.54	1.56	(1.15 - 2.05)	Higher
Pediatric	9	13	7,562	11.68	1.11	(0.61 - 1.85)	Same
Surgical	15	75	38,516	69.16	1.08	(0.85 - 1.35)	Same
Trauma	3	9	6,996	19.18	0.47	(0.22 - 0.86)	Lower

State CAUTI SIRs Compared to National Average



State Catheter Utilization Ratios



Massachusetts Calendar Year 2017 HAI Data Summary

Release Date: July 2018

Statewide Hospital Summary

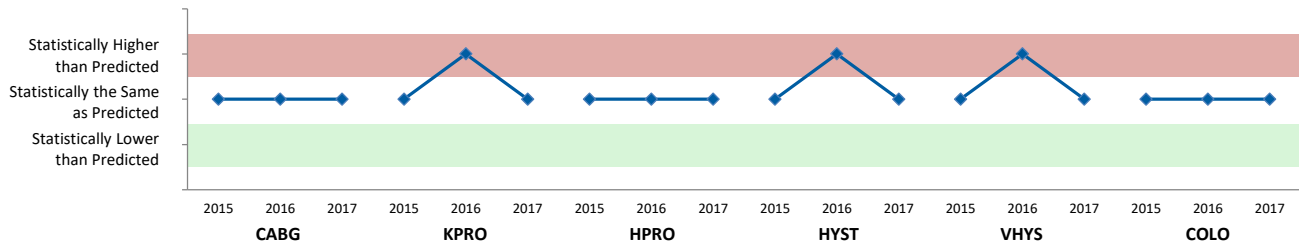


Surgical Site Infection

SSI SIRs by Procedure Type for 2017 Calendar Year

Procedure		Hospitals Reporting	Infections	Procedures	Predicted Infections	SIR	Confidence Interval	Interpretation
Coronary Artery Bypass Graft	(CABG)	13	33	4,058	32.98	1.00	(0.70 - 1.38)	Same
Knee Prosthesis	(KPRO)	56	69	17,514	54.21	1.27	(0.99 - 1.60)	Same
Hip Prosthesis	(HPRO)	56	76	14,363	75.38	1.01	(0.80 - 1.25)	Same
Abdominal Hysterectomy	(HYST)	52	47	4,644	35.10	1.34	(0.99 - 1.76)	Same
Vaginal Hysterectomy	(VHYS)	51	10	1,254	7.40	1.35	(0.68 - 2.40)	Same
Colon Surgery	(COLO)	61	173	7,454	185.11	0.94	(0.80 - 1.08)	Same

Statistically Significant Variation from Predicted Number of Surgical Site Infections, 2015-2017



Facility Wide LabID Events

CDI and MRSA SIRs for 2017 Calendar Year

Event		Hospitals Reporting	Infections	Patient Days	Predicted Infections	SIR	Confidence Interval	Interpretation
<i>Clostridium difficile</i>	(CDI)	69	2,186	3,402,226	2,439	0.90	(0.85 - 0.93)	Lower
Methicillin-resistant <i>Staphylococcus aureus</i>	(MRSA)	69	150	3,706,155	215	0.70	(0.59 - 0.81)	Lower

Statistically Significant Variation from Predicted Number of LabID Events, 2015-2017

