



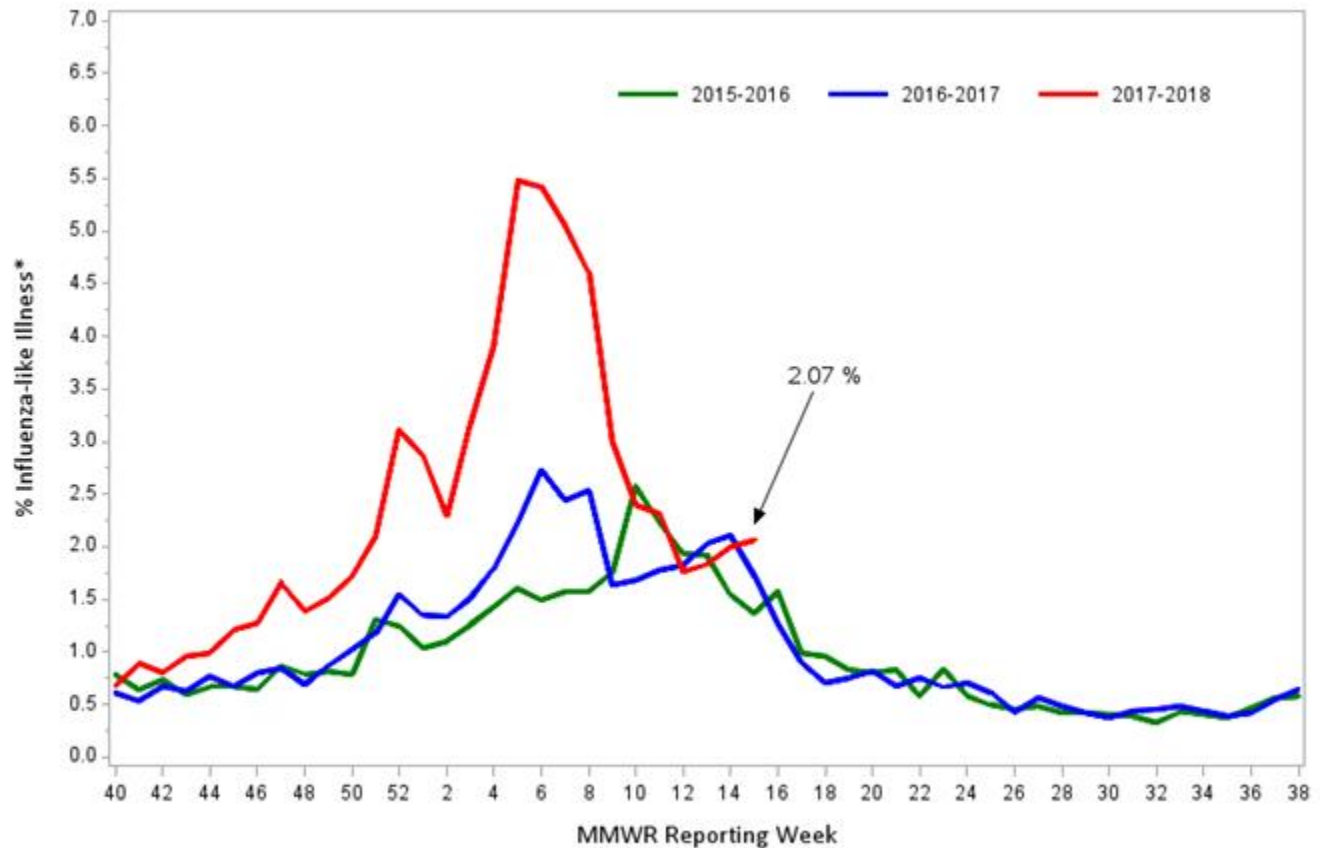
*The following is a message from Joyce Cohen at the Massachusetts Department of Public Health:*

- **National Influenza Activity:** During week 15 (April 8-14, 2018), influenza activity decreased in the United States.
- **Viral Surveillance:** Overall, influenza A(H3) viruses have predominated this season. Since early March, influenza B viruses have been more frequently reported than influenza A viruses. The percentage of respiratory specimens testing positive for influenza in clinical laboratories decreased.
- **Pneumonia and Influenza Mortality:** The proportion of deaths attributed to pneumonia and influenza (P&I) was below the system-specific epidemic threshold in the National Center for Health Statistics (NCHS) Mortality Surveillance System.
- **Influenza-associated Pediatric Deaths:** Five influenza-associated pediatric deaths were reported.
- **Influenza-associated Hospitalizations:** A cumulative rate of 103.7 laboratory-confirmed influenza-associated hospitalizations per 100,000 population was reported.
- **Outpatient Illness Surveillance:** The proportion of outpatient visits for influenza-like illness (ILI) was 1.8%, which is below the national baseline of 2.2%. One of 10 regions reported ILI at or above their region-specific baseline level. One state experienced high ILI activity; two states experienced moderate ILI activity; six states experienced low ILI activity; and New York City, the District of Columbia, Puerto Rico, and 41 states experienced minimal ILI activity.
- **Geographic Spread of Influenza:** The geographic spread of influenza in five states was reported as widespread; Guam, Puerto Rico and 16 states reported regional activity; 21 states reported local activity; the District of Columbia and six states reported sporadic activity; and the U.S. Virgin Islands and two states reported no influenza activity.

### **Influenza Activity in Massachusetts**

For week 15, influenza-like illness (ILI, defined by fever >100°F and cough and/or sore throat) activity was reported as **Widespread** in Massachusetts, at **Low** intensity.

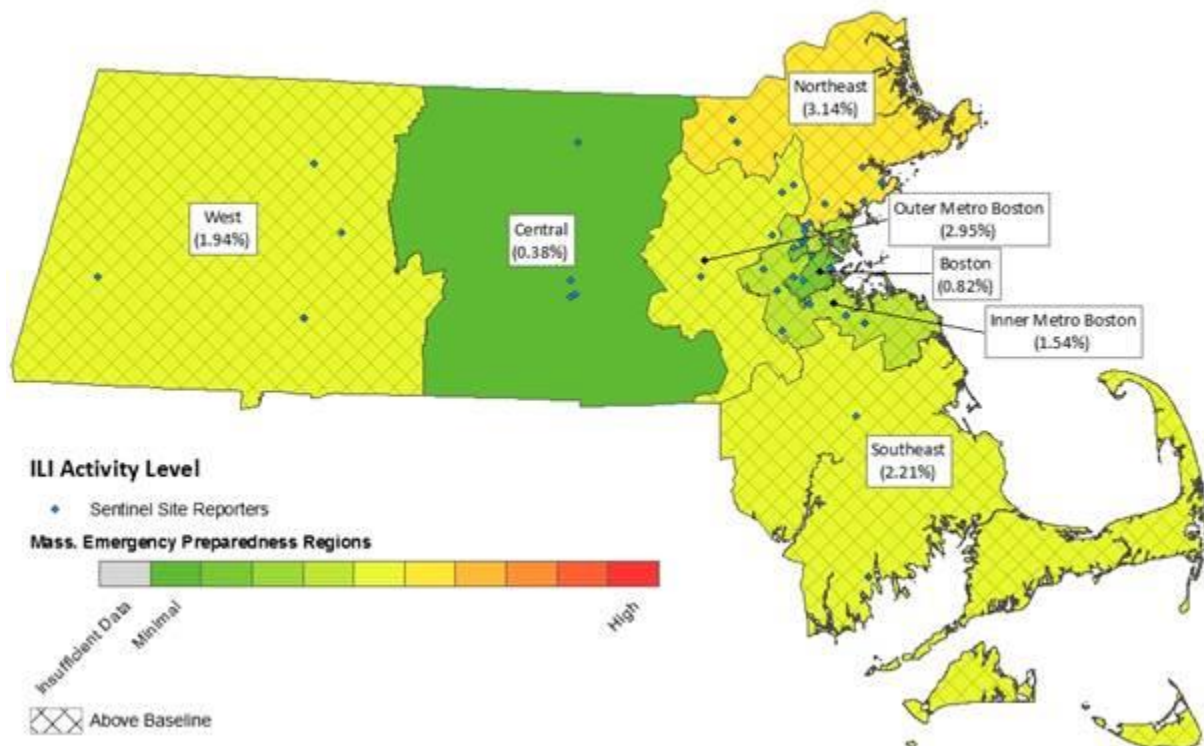
Figure 1: Percentage of ILI visits reported by sentinel provider sites



\*Influenza-like illness (ILI, defined by fever >100F and cough and/or sore throat), as reported by Massachusetts sentinel surveillance sites

Figure 2 shows the intensity of reported ILI activity in Massachusetts by region. The activity level for each region (and associated color) is in relation to a baseline ILI activity level for that region. Differences in activity may reflect variation in the size and type of patient population served by reporting providers in that region. Figure 2 shows that six of the seven regions of the state are reporting increased ILI. The Central region is reporting minimal ILI activity.

Figure 2: Percent ILI Activity Level Reported Weekly by Massachusetts Sentinel Sites



Detailed weekly flu surveillance reports are posted on the [Mass Public Health Blog](#).

### Questions and Resources

- **MDPH Influenza Vaccine Guidelines and Tools**. This webpage contains information about influenza vaccine and links to guidance about planning flu and other mass immunization campaigns, standing orders, screening forms, consent forms, and MDPH-specific vaccine management guidance.
- **One & Only Campaign**. The One & Only Campaign is a public health campaign, led by the Centers for Disease Control and Prevention (CDC) and the Safe Injection Practices Coalition (SIPC), to raise awareness among patients and healthcare providers about safe injection practices.

**MDPH Recommendations and Resources for the Control of Influenza and Pneumococcal Disease (2017-2018)**.

**MDPH Control of Influenza and Pneumococcal Disease in Long-Term Care Facilities (2017-2018)**

**CDC Make a Strong Flu Vaccine Recommendation**

**CDC Know the Site, Get it Right!**

### Vaccine Ordering and Locating Clinics

#### Providers Wishing to Order Flu Vaccine for Private Purchase:

The national [Influenza Vaccine Availability Tracking System](#) (IVATS) assists providers wishing to privately purchase flu vaccine. IVATS identifies available doses of influenza vaccine by formulation and distributor/vendor throughout the season.

- **Location of Adult Vaccination Services:**

[HealthMap Vaccine Finder](#) assists the public with locating influenza and adult vaccination services within their communities. It is a free, online service where users can search for locations that offer immunizations. Its staff works with partners such as clinics, pharmacies, and local health departments to provide accurate and up-to-date information about vaccination services. MDPH urges providers and other agencies to register their locations on the [HealthMap Vaccine Finder](#) site too.

For questions about influenza please call the Massachusetts Department of Public Health Immunization Program at 617-983-6800 or your local board of health.

For questions about state-supplied influenza vaccine, please call the Vaccine Unit at 617-983-6828.

Joyce Cohen, MPH

*Epidemiologist*

Influenza Coordinator

Massachusetts Department of Public Health

Website: [www.mass.gov/dph](http://www.mass.gov/dph)

Blog: <http://publichealth.blog.state.ma.us>